

Earth-Rite **RTR™** Tri-Mode Technology (PATENT PENDING)

Static Earthing for Road Tankers



Road Tanker Recognition

Only allows product transfer when system is connected to road tanker

Positive Earth Recognition

Automatically confirms positive static earth connection

Earth Connection Monitoring

Continuously monitors clamp and earth connection during transfer

IECEX



ATEX

SIL 2



APPROVED



The **Earth-Rite RTR™** ensures the highest possible levels of safe, positive earthing for road tankers during flammable transfer operations. Unlike conventional systems, the Earth-Rite **RTR™** provides failsafe confirmation of the static earth condition using patented Intrinsically Safe Electronics.

LOADTEC
Engineered Systems Ltd.



Tri-Mode Technology (PATENT PENDING)

MODE 1 | Road Tanker Recognition

Confirms RTR clamp is connected to road tanker and not other earthed/unearthed objects.

MODE 2 | Positive Earth Recognition

Confirms positive static earth connection before connecting tanker to earth.

MODE 3 | Earth Connection Monitoring

Confirms clamp connection and earth connection is good throughout transfer process by ensuring connection resistance does not rise above 10 Ohms.

For ordering codes and more detailed technical information please refer to product specification sheet.

The Earth-Rite RTR™ Static Earthing System

is designed specifically for road tankers with rubber tyres. For dedicated loading/unloading of Rail Cars or other conductive mobile tanks, IBC totes and drums the standard Earth-Rite PLUS system with Single Mode (Earth resistance monitoring) is available. **For complete flexibility in mixed loading applications specify the Earth-Rite RTR™ with additional Mode Selector Key Switch.**

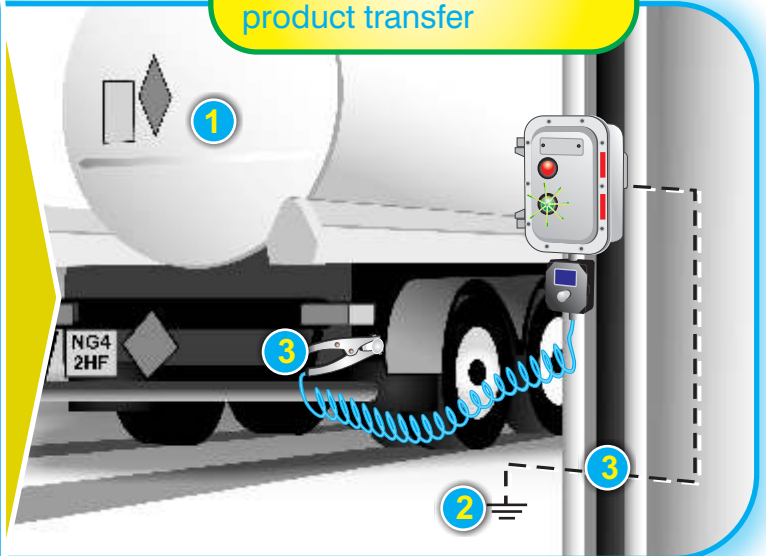
ATEX Certification:

Ex d (ia) IIB T6

Ex d (ia) IIC T6

Functional Safety Rating: SIL 2

GREEN LIGHT ✓
Tri-Mode checks complete - RTR permits product transfer



Reliability | The RTR has been independently tested and approved for mounting in SIL2 rated environments confirming the Earth-Rite's 10 year track record of proven system reliability and performance.

Flexibility | The RTR can be mounted at remote loading stations and connected to locally verified earth points and can reduce the cost of installation and maintenance.

Compliance with NFPA 77 and CENELEC 50404 | The RTR enables compliance with the best practice guidelines of NFPA 77 & CENELEC 50404 which recommend that road tankers present in hazardous atmospheres be fully earthed prior to and during the transfer of cargo.

LOADTEC
Engineered Systems Ltd.

Loadtec | The Stables, Coach House, Hythe Road, Smeeth, Kent, TN25 6SP, UK
tel: +44 (0) 1303 813 030 fax: +44 (0) 1303 814 040 sales@loadtec.co.uk

www.loadtec.co.uk